

# The Green

Consultation meeting September 10  
2014

# The Green

- Agenda
  - Welcome
  - Introduction History and Background
  - Questions on presentation
  - Table Talk
  - Over to you
  - Summing up



# What is not planned

- Car Park
- Houses
- Children's Playground
- Front Garden for new houses



# The Green's environment continues to change

- Donated by Mrs Bate of the Lydiate House in 1953
- 1990's Jewellery Factory extended
  - Blank wall behind Green
- 2014 Jewellery factory demolished
- 2015? New housing to be built



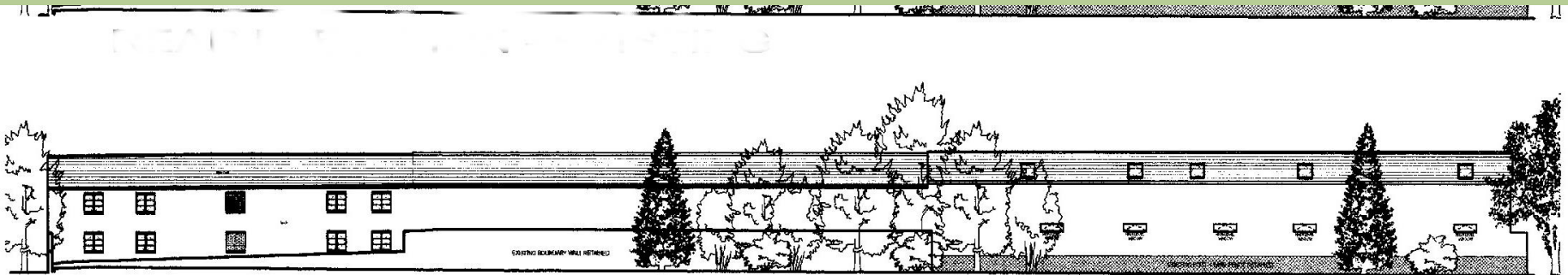
# Current Situation

- 2011 Planning permission to build on Jewellery Factory site granted
  - 2014 Jewellery Factory demolished
- Boundary Dispute
  - Has been settled
    - Boundary back to pre demolition line
    - Indicated by a blue rope



# Jewellery factory development

- 2011 Initial plan was for the backs of the houses to face the Green
  - Backdrop of the Green would be substantially another blank wall



REAR ELEVATION ROOFLIGHT OPTION

# Jewellery factory development

- 2011 After consultation with the Parish Council and a village consultation
  - houses were reversed with a 1 metre wide path to the doors and a low fence at the boundary
  - Proposed archway to provide public access to Green
  - No Objections



# Jewellery Factory development

- For current proposal it was expected that the trees along the back of the Green are removed
  - 2014 developer applied to Bromsgrove District Council for planning permission for the trees to be removed
  - No objection from Tree Officer or Conservation Officer
    - Tree Officer's Comment: "Largely, but not all, poor quality trees"
  - Condition of Approval that the trees are replaced
  - Trees on Parish Council land so PC has power to refuse removal



# The Green development

- Since 2011 the Parish Council has been looking at ways to increase usage of the green
- A design was produced for some changes to the Green
- This including removal of the trees

# The Green development

- Village consultation in January 2014
  - Majority support for some changes
    - Some of the ideas suggested were not popular. e.g. Performance area, maze
  - Used a design from the developers planning application
    - This was based on Parish Council ideas



# Current position

- No decisions have been made on the Green at this time
- It will remain an open space for the community to enjoy
- Here to listen
- Questions on the Presentation?

# Timescale

- Return of Questionnaires by 24th September
- Parish Council to make decision Autumn 2014
- Building on the Jewellery Factory likely to start spring 2015
- Target if trees are to be removed spring 15
- Other changes from Autumn 15
- All timing and nature of works on the Green will be decided by the Parish Council in conjunction with the Village
  - Severn Trent MAY require a sewer to be installed across the Green. The Parish Council can not refuse this request.

# Table Talk

- You have a questionnaire
- Please discuss the options for 15- 30 minutes
- Then it's your turn



# Over to you...

- Please identify yourself and where you live
  - Only Parishioners may speak
- One person at a time please
- Be as brief as practical to allow everyone to speak





# Thank you for your time and input



Further copies of the Questionnaire are available at the Village Post Offices