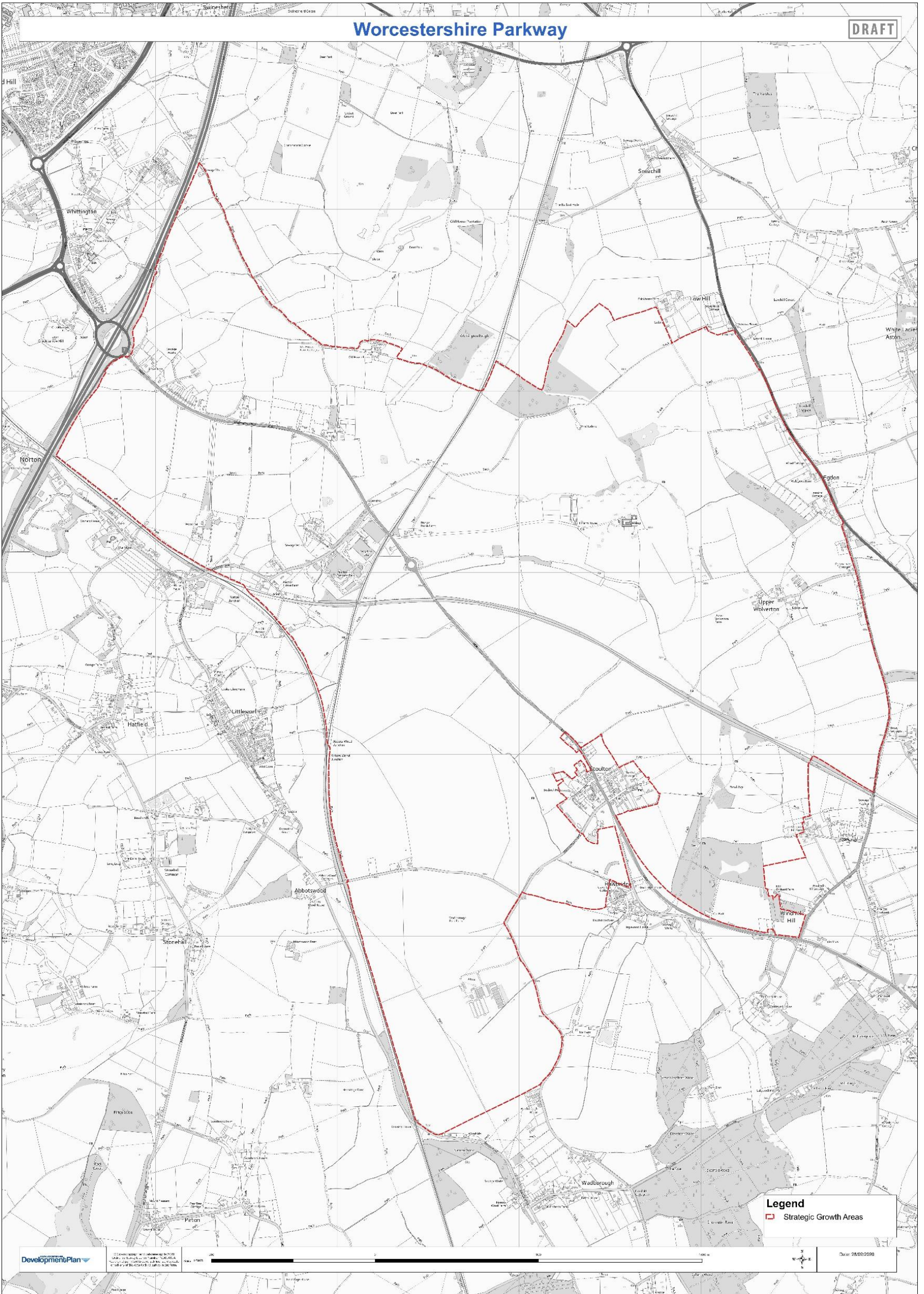


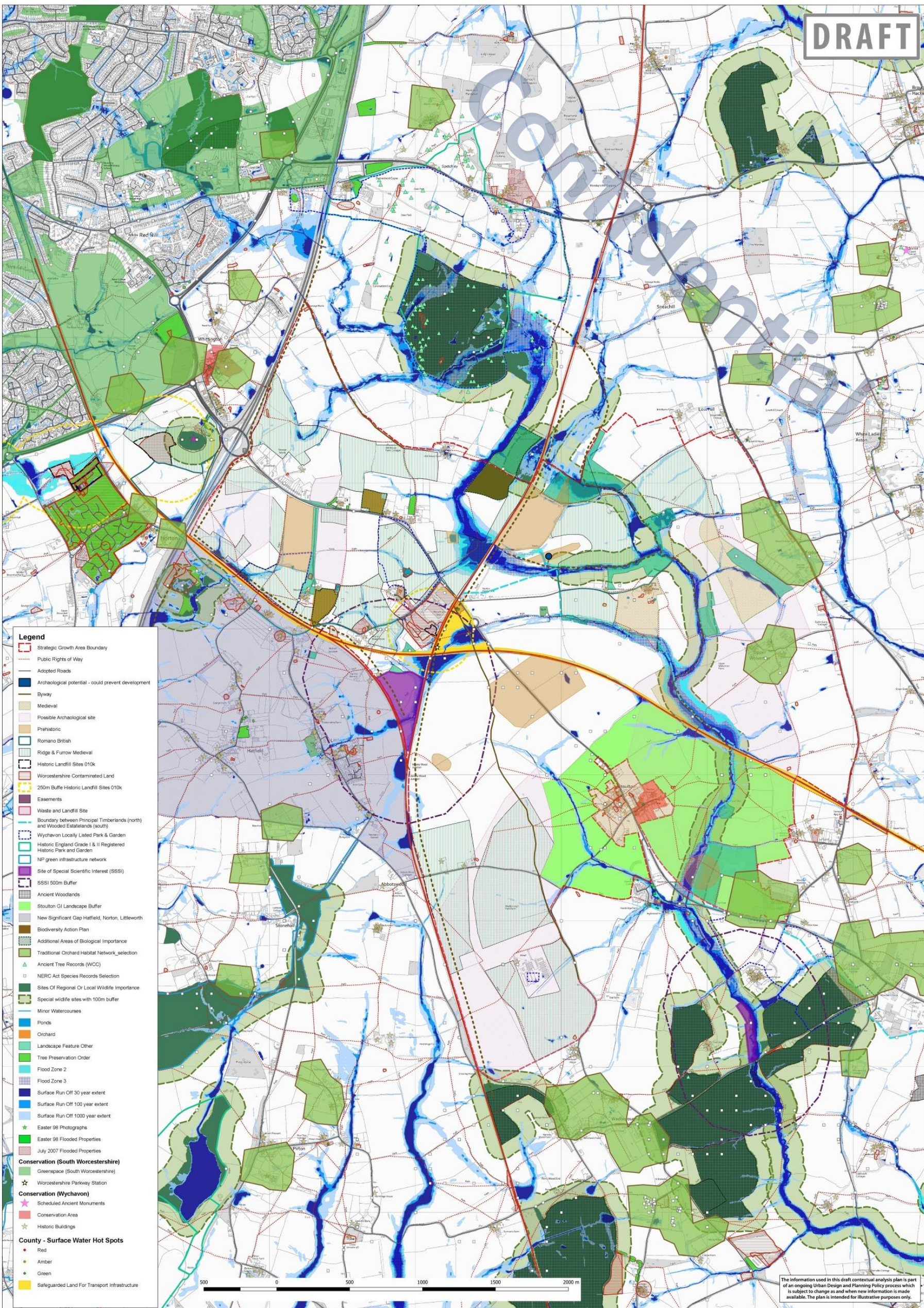
# Worcestershire Parkway

DRAFT



**Legend**  
[Red dashed line symbol] Strategic Growth Areas

DRAFT



- Legend**
- Strategic Growth Area Boundary
  - Public Rights of Way
  - Adopted Roads
  - Archaeological potential - could prevent development
  - Byway
  - Medieval
  - Possible Archaeological site
  - Prehistoric
  - Romano British
  - Ridge & Furrow Medieval
  - Historic Landfill Sites 010k
  - Worcestershire Contaminated Land
  - 250m Buffer Historic Landfill Sites 010k
  - Easements
  - Waste and Landfill Site
  - Boundary between Principal Timberlands (north) and Wooded Estatelands (south)
  - Wychovon Locally Listed Park & Garden
  - Historic England Grade I & II Registered Historic Park and Garden
  - NP green infrastructure network
  - Site of Special Scientific Interest (SSSI)
  - SSSI 500m Buffer
  - Ancient Woodlands
  - Stouton GI Landscape Buffer
  - New Significant Gap Hatfield, Norton, Littleworth
  - Biodiversity Action Plan
  - Additional Areas of Biological Importance
  - Traditional Orchard Habitat Network\_selection
  - Ancient Tree Records (WCC)
  - NERC Act Species Records Selection
  - Sites Of Regional Or Local Wildlife Importance
  - Special wildlife sites with 100m buffer
  - Minor Watercourses
  - Ponds
  - Orchard
  - Landscape Feature Other
  - Tree Preservation Order
  - Flood Zone 2
  - Flood Zone 3
  - Surface Run Off 30 year extent
  - Surface Run Off 100 year extent
  - Surface Run Off 1000 year extent
  - Easter 98 Photographs
  - Easter 98 Flooded Properties
  - July 2007 Flooded Properties
  - Conservation (South Worcestershire)**
  - GreenSpace (South Worcestershire)
  - Worcestershire Parkway Station
  - Conservation (Wychavon)**
  - Scheduled Ancient Monuments
  - Conservation Area
  - Historic Buildings
  - County - Surface Water Hot Spots**
  - Red
  - Amber
  - Green
  - Safeguarded Land For Transport Infrastructure



The information used in this draft contextual analysis plan is part of an ongoing Urban Design and Planning Policy process which is subject to change as and when new information is made available. The plan is intended for illustrative purposes only.

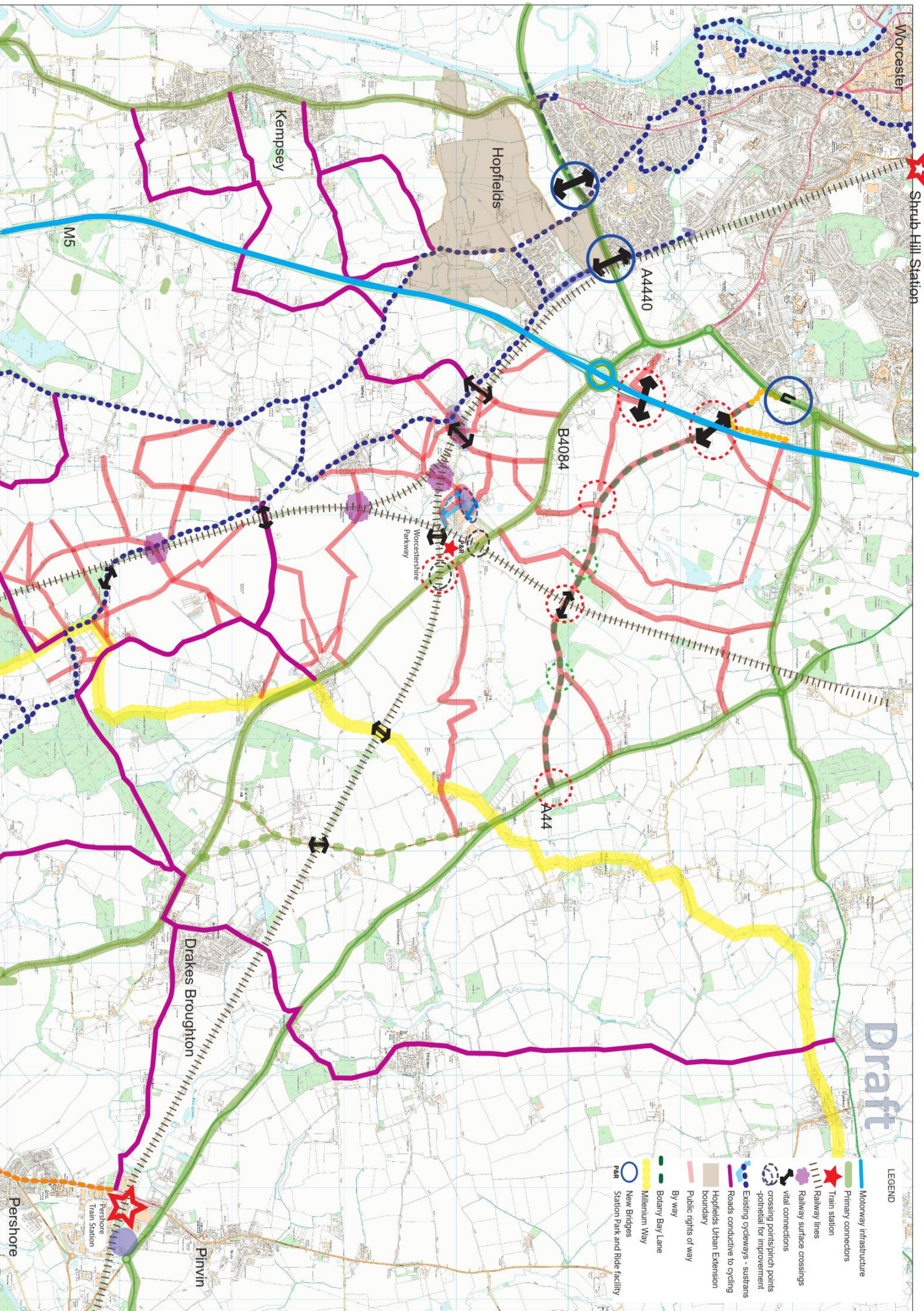
Worcester

Shrub Hill Station

# Draft

LEGEND

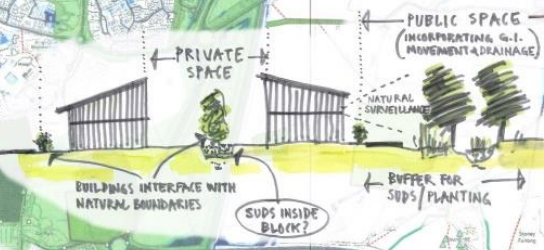
- Motorway infrastructure
- Primary connectors
- Train station
- Railway lines
- Railway surface crossings
- vital connections
- crossing points/pinch points
- potential for improvement
- Existing cycleways - sustans
- Roads conducive to cycling
- Hopfields Urban Extension boundary
- Public rights of way
- By way
- Botany Bay Lane
- Millennium Way
- New Bridges
- Station Park and Ride facility



DRAFT

WEST G.I. PRINCIPLES

- \* TREE LINED STREETS WIDE ENOUGH FOR SIGNIFICANT TREE PLANTING
- \* SUDS & DRAINAGE SWALES/PONDS AS POSITIVE FEATURES (DEVELOPMENT ASSET)
- \* PROTECTING & ENHANCING PANORAMIC & STRATEGIC VIEWS (MALVERNAS, CROOKBARN HILL & BRODBON HILLS)
- \* MINIMISE SCALE & MASSING IMPACT FROM DEVELOPMENT (ESPECIALLY EMPLOYMENT)
- \* DEVELOPMENT TO WORK WITH EXG. TOPOGRAPHY
- \* NO NET INCREASE IN RUN OFF (GREENFIELDS RUN OFF RATES ONLY)
- \* ESTABLISH DESIGN PRINCIPLES FOR EMPLOYMENT THAT INCORPORATE GREEN ROOF/WALL TECHNIQUES



INTEGRATED DRAINAGE STRATEGY

WATER COURSES/CATCHMENT

- \* WIDER STUDY FOR SURFACE RUN OFF & FLOODING, BEYOND THE SITE BOUNDARY.
- \* DRAINAGE STRATEGY FOR WIDER DRAINAGE INFRASTRUCTURE & SITE SPECIFIC GUIDANCE.
- (THIS IS TO ENABLE SUB-COMPARTMENTALISING, WORKING INDIVIDUALLY AND, WHERE JOINED, OPERATE AS PART OF THE WIDER INFRASTRUCTURE)

EAST G.I. PRINCIPLES

- ENSURE/PROTECT/ENHANCE
- \* EXISTING BIODIVERSITY CONNECTIVITY & NEW OPPORTUNITIES.
- \* LANDSCAPE RESILIENCE - MAINTAINING LANDSCAPE CHARACTER & INTEGRITY AS A WHOLE.
- \* TREE PLANTING & RETENTION - STRATEGY FOR PRE-DEVELOPMENT - PHASE I PART OF G.I. STAGE I CONTRIBUTIONS.
- \* PARKLAND PLANTING APPROACH - INFORMED BY CURRENT LANDSCAPE CHARACTER.
- \* ACCESSIBILITY TO MULTI-FUNCTIONAL GREEN SPACES. NEW SPACES SHOULD BE INTEGRATED OR NEXT TO BIODIVERSITY CORRIDORS.
- \* G.I. BUFFER - CREATION OF ZONE FOR IMPROVED DRAINAGE/WATER MANAGEMENT/TREE PLANTING/CONNECTIVITY & ACCESSIBILITY RECREATION.
- \* NEW DEVELOPMENT SHOULD BE DESIGNED TO RESPOND TO G.I. PRINCIPLES & CLIMATE CHANGE

HEDGEROWS/ORCHARDS PRINCIPLES

- \* RETAIN AS MUCH AS POSSIBLE.
- \* ENSURE PROTECTION OF HABITAT DIVERSITY.
- \* MINIMISING DISTURBANCE FOR WILDLIFE.
- \* PRACTICE OF TRANSLOCATION OF HEDGES/HABITATS IF REMOVAL IS REQUIRED.
- \* ENHANCE EXISTING ORCHARDS.
- \* CREATE NEW COMMUNITY ORCHARDS.

TREES - PRINCIPLE

- \* CONTINUITY - CANOPY/SHADE (TYPOLOGIES OF DEVELOPMENT -> DENSITY?)
- \* DESIGN CODE(S) - REACTIVE TO CONTEXT.
- \* MEANS OF TERMS IN POLICY.
- \* WATER
- \* G.I.
- \* DRAINAGE
- \* WORCESTER SOUTH APPROACH ROBUST POLICY

CYCLING & WALKING

- \* SHOWERS/STORAGE FACILITIES ON SITE.
- \* GOOD ATTRACTIVE ROUTES - WORK/LEISURE.
- \* ACTIVE TRAVEL ROUTES - MATERIAL SURFACING PERMEABILITY/DRAINAGE.
- \* CREATE CIRCULAR WALKS & CYCLEWAYS.
- \* ACTIVE TRAVEL ROUTES.

PRINCIPLE

- \* LOW DENSITY/WHAMLET STYLE.
- \* ENHANCE FIELD BOUNDARIES.
- \* APPROPRIATE SCALE DEV.

PRINCIPLES CORRIDOR SEVERANCE

- \* DON'T COMPROMISE EAST/WEST CONNECTIVITY FOR G.I./BIODIVERSITY.
- \* INTEGRATION OF G.I. INTO THE BUILT FORM.
- \* LARGE PLOTS - DELIVER - ON PLOT/FABRIC OF ENVIRONMENT.

Sustainability Buffer for G.I./SUDS/Biodiversity

**Legend**

- Strategic Growth Area Boundary
- Public Rights of Way
- Adopted Roads
- Archaeological potential - could prevent development
- Byway
- Medieval
- Possible Archaeological site
- Prehistoric
- Romano British
- Ridge & Furrow Medieval
- Historic Landfill Sites 010k
- Worcestershire Contaminated Land
- 250m Buffer Historic Landfill Sites 010k
- Easements
- Waste and Landfill Site
- Boundary between Principal Timberlands (north) and Wooded Estate Lands (south)
- Wychavon Locally Listed Park & Garden
- Historic England Grade I & II Registered Historic Park and Garden
- NP green infrastructure network
- Site of Special Scientific Interest (SSSI)
- SSSI 500m Buffer
- Ancient Woodlands
- Stouton G.I. Landscape Buffer
- New Significant Gap Hatfield, Norton, Littleworth
- Biodiversity Action Plan
- Additional Areas of Biological Importance
- Traditional Orchard Habitat Network selection
- Ancient Tree Records (WCC)
- NERC Act Species Records Selection
- Sites Of Regional Or Local Wildlife Importance
- Special wildlife sites with 100m buffer
- Minor Watercourses
- Ponds
- Orchard
- Landscape Feature Other
- Tree Preservation Order
- Flood Zone 2
- Flood Zone 3
- Surface Run Off 30 year extent
- Surface Run Off 100 year extent
- Surface Run Off 1000 year extent
- Easter 98 Photographs
- Easter 98 Flooded Properties
- July 2007 Flooded Properties
- Conservation (South Worcestershire)
- Greenspace (South Worcestershire)
- Worcestershire Parkway Station
- Conservation (Wychavon)
- Scheduled Ancient Monuments
- Conservation Area
- Historic Buildings
- County - Surface Water Hot Spots
- Red
- Amber
- Green
- Safeguarded Land For Transport Infrastructure



The information used in this draft contextual analysis plan is part of an ongoing Urban Design and Planning Policy process which is subject to change as and when new information is made available. The plan is intended for illustrative purposes only.

# Worcestershire Parkway

**DRAFT**

**Legend**

- Existing Public Rights of Way - Potential to form part of the movement framework
- Potential new connections
- Railway line
- Bridges
- Existing road network
- Motorway M5
- Existing Sustrans
- Potential for new active travel/sustrans routes
- Strategic Landmarks
- Local Landmarks
- Roads
- Woodbury Lane potential improvement
- Biodiversity GI Buffer
- GI multifunctional green links
- Archaeological site - not suitable for development
- Areas not suitable for development
- Historic Parkland and Grassland to be protected/enhanced
- Existing Employment Land
- Existing Development
- Potential areas of land suitable for development
- Public Transport Hub
- Station platforms

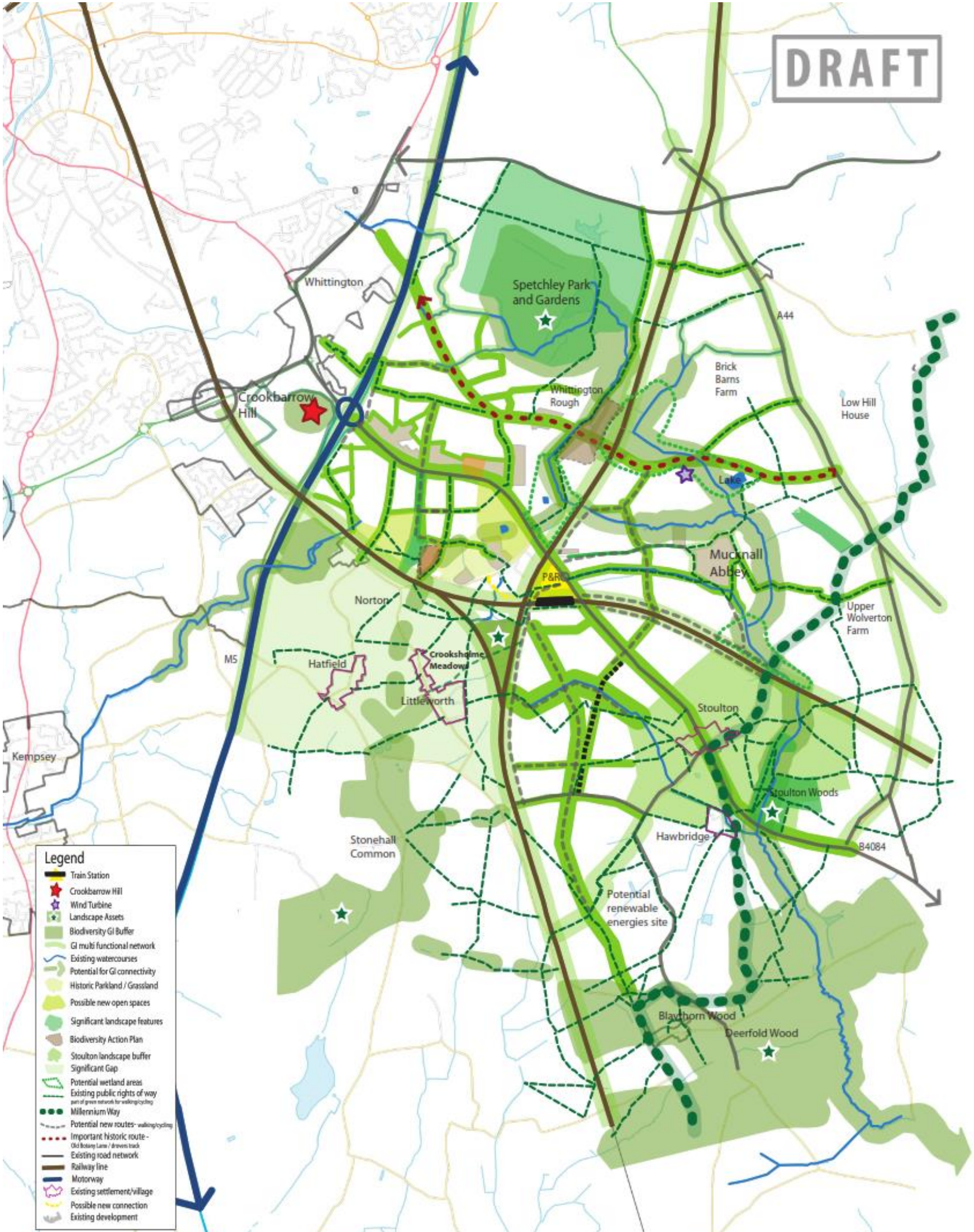
**Legend**

- Designated Highways
- Highways
- Other
- Water
- Woodland
- Possible Archaeological site
- Prehistoric
- Roman Britain
- Ridge & Furrow Medieval
- Historic Landfill Site 01/04
- Worcestershire Contaminated Land
- 200m Buffer Historic Landfill Site 01/04
- Estuaries
- Water and Landfill Site
- Boundary between Principal Timberlands (north) and Wooded Grasslands (south)
- Woodland Locally Listed Park & Garden
- Historic England Grade I & II Registered Historic Park and Garden
- IP green infrastructure network
- Site of Special Scientific Interest (SSSI)
- SSSI 500m Buffer
- Armed Woodlands
- Seafront 10 Landscaped Buffer
- New Significant Gap Method, Norton, Littleworth
- Endangered Action Plan
- Additional Areas of Biological Importance
- Traditional Orchard Habitat Network, selection
- Ancient Tree Records (ATR)
- NERC Air Species Reserve Selection
- Site of Special Scientific Interest (SSSI) (SSSI)
- Special Areas of Conservation (SAC)
- Minor Watercourses
- Rivers
- Streams
- Landscape Feature Other
- Tree Preservation Order
- Flood Zone 2
- Flood Zone 3
- Surface Run CR 30 year extent
- Surface Run CR 100 year extent
- Surface Run CR 1000 year extent
- Order 90 Photographs
- Order 90 Flooded Properties
- July 2007 Flooded Properties
- Conservation (South Worcestershire)
- GreenSpace (South Worcestershire)
- Worcestershire Parkway Station
- Conservation (Wyching)
- Scheduled Ancient Monuments
- Conservation Area
- Historic Buildings
- County - Surface Water Hot Spots
- Hot
- Amber
- Green
- Designated Land for Transport Infrastructure



The information used in this draft concept analysis plan is part of an ongoing Urban Design and Planning Policy process which is subject to change as and when new information is made available. The plan is intended for illustrative purposes only.

**DRAFT**



- Legend**
- Train Station
  - Crookbarrow Hill
  - Wind Turbine
  - Landscape Assets
  - Biodiversity GI Buffer
  - GI multi functional network
  - Existing watercourses
  - Potential for GI connectivity
  - Historic Parkland / Grassland
  - Possible new open spaces
  - Significant landscape features
  - Biodiversity Action Plan
  - Stoulton landscape buffer
  - Significant Gap
  - Potential wetland areas
  - Existing public rights of way
  - part of green network for walking/cycling
  - Millennium Way
  - Potential new routes - walking/cycling
  - Important historic route - Old loosey Lane / driven back
  - Existing road network
  - Railway line
  - Motorway
  - Existing settlement/village
  - Possible new connection
  - Existing development

This draft Concept Plan is part of an ongoing Urban Design and Planning Policy process which is subject to change as and when new information is made available. The Plan is intended for illustrative purposes only.

Date: 29/07/20

