

MONKWOOD GREEN, NEAR HALLOW

Saturday 18 June 2022

Leader: Christopher Betts

Eight members and several local residents on Monkwood Green gathered in the garage of The Woodlands to examine the night's moth catch from the Editor's garden between Monkwood and Monkwood Green SSSIs. We were in the garage because, although the night had been warm, dry and calm which was ideal for moths, the weather had turned wet. The minimum temperature overnight was 18° Celsius at 0400. Daytime temperature had reached 32°C on 17 June.

The Editor thanked Cherry Greenway, John and Carol Taylor and other Club members for assistance with identification and recording. The help of Sue Wilson and Cecilia Betts for the refreshments was also much appreciated by all.

Moth records for the night of 17/18 June 2022 at Monkwood/Monkwood Green (VC 37, national grid reference SO 80206030) using a Robinson 125W mercury vapour light moth trap, are given below. The nomenclature generally follows Bradley, J. (2000) (2nd edn.). *Checklist of Lepidoptera recorded from the British Isles*, Fordingbridge, UK. There were no records of particularly uncommon species but, although well distributed in Britain, the gold spot is a first record here (photo below): it likes damp ditches and similar places. The presence of a scarlet tiger in the trap was unusual as, whilst this species is becoming increasingly common here, it is diurnal and I have never recorded it at light. A blackbird was busy eating moths that had settled outside the trap when I went out at 4 a.m.! Several specimens were too worn for confident identification and have been ignored. Some micros, which were very numerous, escaped. The list below is therefore deficient in these respects. The species mix was noted to be rather different from the same time last year.

Common name	Scientific name	Check-list №	Moths Caught
Barred yellow	<i>Cidaria fulvata</i>	1765	2
Barred fruit-tree tortrix	<i>Pandemis cerasana</i>	4579	2
Barred straw	<i>Gandaritis pyraliata</i>	1758	3
Beautiful golden Y	<i>Autographa pulchrina</i>	2442	1
Beautiful hook-tip	<i>Laspeyria flexula</i>	2473	3
Birch marble	<i>Apotomis betuleтана</i>	1093	4
Blood-vein	<i>Timandra comae</i>	1682	1
Blotched emerald	<i>Comibaena bajularia</i>	1667	5
Blue-bordered carpet	<i>Plemyria rubiginata</i>	1766	1
Brimstone moth	<i>Opisthograptis luteolata</i>	1906	3
Buff arches	<i>Habrosyne pyritoides</i>	1653	2
Buff ermine	<i>Spilosoma lutea</i>	2061	2
Buff tip	<i>Phalera bucephala</i>	1994	5
Clouded silver	<i>Lomographa temerata</i>	1958	2
Common emerald	<i>Hemithea aestivaria</i>	1669	1
Common pug	<i>Eupithecia vulgate</i>	1834	1

Common name	Scientific name	Check-list №	Moths Caught
Common purple & gold	<i>Pyrausta purpuralis</i>	17581	1
Common swift	<i>Korscheltellus lupulina</i>	17	1
Common wainscot	<i>Mythimna pallens</i>	2199	5
Common wave	<i>Cabera exanthemata</i>	1956	2
Common yellow conch	<i>Agapeta hamana</i>	937	5
Common wave	<i>Cabera exanthemata</i>	1956	3
Dark arches	<i>Apamea monoglypha</i>	2321	5
Dotted oak knot-horn	<i>Phycita roborella</i>	1452	1
Double square-spot	<i>Xestia Triangulum</i>	2128	1
Double-striped pug	<i>Gymnoscelis rufifasciata</i>	1862	1
Elephant hawk-moth	<i>Deilephila elpenor</i>	1991	8
Engrailed, The	<i>Ectropis bistortata</i>	1947	1
Flame, The	<i>Axylia putris</i>	20983	3
Flame shoulder	<i>Ochropleura plecta</i>	2102	3
Frosted green	<i>Polyploca ridens</i>	1660	2
Garden grass veneer	<i>Chrysoteuchia culmella</i>	1293	4
Great oak beauty	<i>Hypomecis roboraria</i>	1943	1
Green oak tortrix	<i>Tortrix viridana</i>	1033	11
Grey arches	<i>Polia nebulosa</i>	2150	1
Heart & dart	<i>Agrotis exclamationis</i>	2089	19
Ingrailed clay	<i>Diarsia mendica</i>	2120	3
Large fruit-tree tortrix	<i>Archips podana</i>	977	4
Large twin-spot carpet	<i>Xanthorhoe quadrifasciata</i>	1726	1
Large yellow underwing	<i>Noctua pronuba</i>	2107	5
Lesser swallow prominent	<i>Pheosia gnoma</i>	2006	1
Light emerald	<i>Campaea margaritaria</i>	1961	2
Lobster moth	<i>Stauropus fagi</i>	1999	4
Little grey	<i>Eudonia lacustrata</i>	1338	1
Marbled minor	<i>Oligia strigilis s.l.</i>	2337	18
May highflyer	<i>Hydriomena impluviata</i>	1778	1
Mottled beauty	<i>Alcis repandata</i>	1941	1
Olive pearl	<i>Udea olivalis</i>	1392	1
Orange pine tortrix	<i>Lozotaeniodes formosana</i>	1001	2
Pale prominent	<i>Pterostoma palpina</i>	2011	1
Pale tussock	<i>Calliteara pudibunda</i>	2028	3
Peppered moth	<i>Biston betularia</i>	1931	7
Pistol case-bearer	<i>Coleophora anatipennella</i>	533	3
Poplar hawk-moth	<i>Laothoe populi</i>	1981	4
Riband wave	<i>Idaea aversata (2 ab. remutata)</i>	1713	3
Scarlet tiger	<i>Callimorpha dominula</i>	2068	1
Setaceous Hebrew character	<i>Xestia c-nigrum</i>	2126	14
Shoulder-striped wainscot	<i>Mythimna comma</i>	2205	4
Silver Y	<i>Autographa gamma</i>	2441	1
Small elephant hawk	<i>Deilephila porcellus</i>	1992	1
Small magpie	<i>Anania hortulata</i>	1376	1
Small square-spot	<i>Diarsia rubi</i>	2123	2
Smoky wainscot	<i>Mythimnia impura</i>	2198	1
Snout, The	<i>Hypena proboscidalis</i>	2477	1
Spectacle, The	<i>Abrostola tripartita</i>	2450	2
Straw dot	<i>Rivula sericealis</i>	2474	19
Tawny marbled minor	<i>Oligia latruncula</i>	2339	2

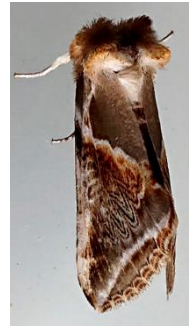
Common name	Scientific name	Check-list №	Moths Caught
Treble lines	<i>Charanyca trigrammica</i>	2380	4
Uncertain, The	<i>Hoplodrina octogenaria</i>	2381	1
White-backed marble	<i>Hedya salicella</i>	1086	1
White ermine	<i>Spilosoma lubricipeda</i>	2060	2
			238

Total moths 238

Total species 71

Several other taxa were in the trap including hundreds of pollen beetles , a tenebrionid darkling beetle *Pseudocistela ceramboides* Crotch, 1873 which is rather scarce and local, three weevils *Curculio venosus* (Gravenhorst, 1807), two orange ladybirds *Halyzia sedecimguttata* (Linnaeus, 1758), a single cockchafer *Melolontha melolontha* (Linnaeus, 1758), a couple of strawberry seed beetles *Harpalus rufipes* (Degeer, 1774), and hundreds of minute helophorid beetles (*Helophorus aequalis* Thomson, C.G. 1868). There was also a green drake mayfly *Ephemera danica* Müller, 1764.

A small selection of photos of moths in the trap follows. In order of rows from left to right they are: barred yellow, buff ermine, buff arches, elephant hawk-moth, orange pine tortrix, the snout.





The Editor with Cherry Greenway recording moths helped by Club members John Taylor and Vanessa Chaplin. Photo by Sue Wilson, thank you.