

Alfrick & Lulsley Parish Council News

Spring 2024



Tree Warden leading a walk through the Parish

GREEN LANES

The Parish of Alfrick and Lulsley has a number of green lanes within its boundary. These are unsurfaced roads which motorised traffic is entitled to use. They are popular with some drivers of 4x4 vehicles and riders of trail/enduro motorbikes. Whilst the majority of recreational users act responsibly there are a number who do not and cause a nuisance with their anti-social behaviour.

Following on-site discussions with the Police and Malvern Hills District Council, the Police have placed signs on Sandy Lane and the Dingle warning that anti-social behaviour will not be tolerated. Nevertheless, it is important that residents who are affected continue to report any ongoing anti-social behaviour to the Police. Although they will not always be able to respond, the calls are logged in the system and if necessary, will allow us to push for additional measures such as nighttime curfews and other restrictions.

NEW BUS SHELTER

The Bus Shelter was completed by a local contractor just before the new year. The Council would like to thank the Community Shop for their generous contribution. A new sign directing toward the Shop is also due to be installed.

**THIS IS THE PARISH COUNCIL'S FINAL PAPER NEWSLETTER
ALL MINUTES AND AGENDAS WILL BE AVAILABLE VIA THE WEBSITE
INFO WILL ALSO BE AVAILABLE IN THE SPHERE
FOR FURTHER DETAILS, PLEASE CONTACT THE CLERK**

TENNIS COURT

We have made a great deal of progress in this exciting project with the new Alfirck Tennis Court scheduled to be ready in early Summer. The Project entails the replacement of existing facilities with a new high-quality, low-maintenance court, completely free to use by the public.

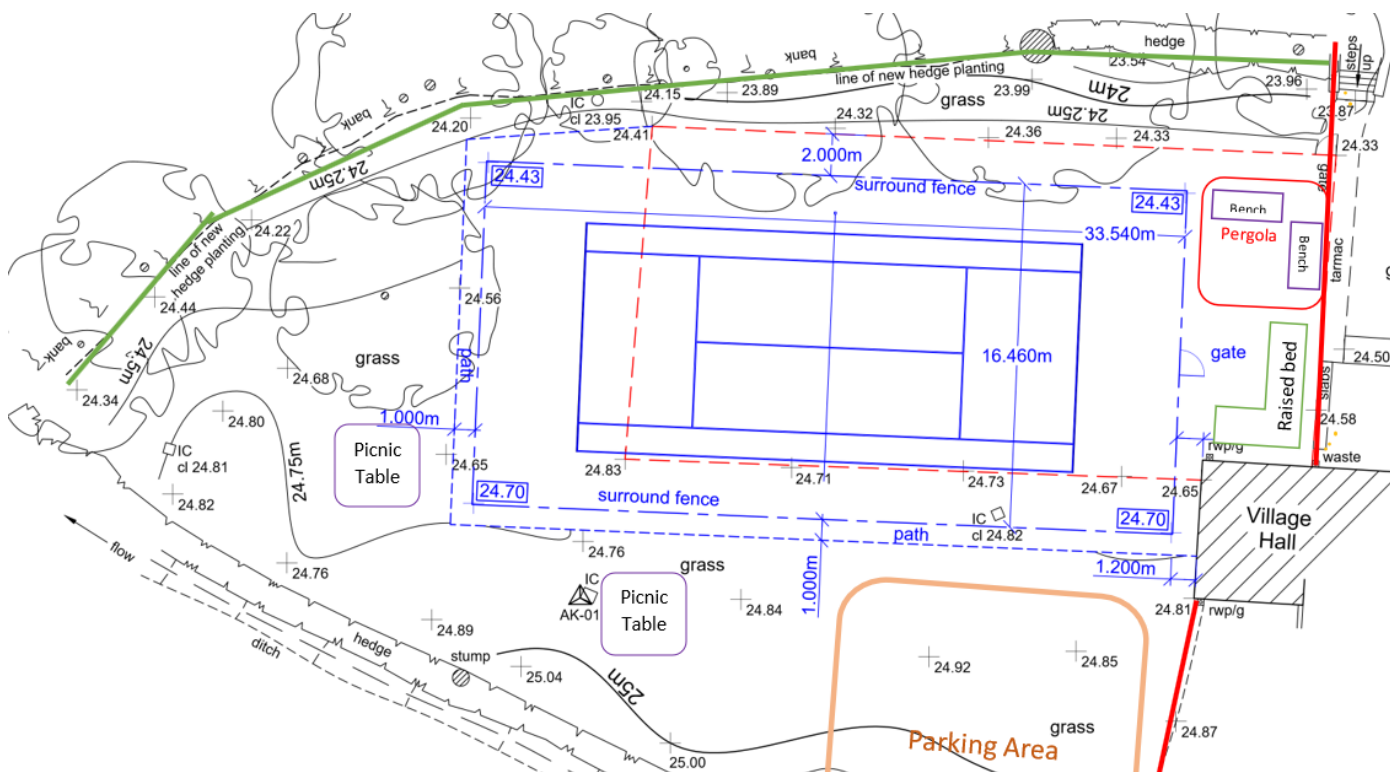
The new Court will be moved away from the Village Hall and the perimeter trees to ensure a full-size court is available. To facilitate the project, the Parish Council has negotiated a 99-year lease with the Village Hall for the whole area at the rear of the and funding over £80,000 has been agreed with MHDC - mainly using a S106 Grant from the new development at Clay Green Farm.

On completion, a couple of picnic benches will be installed, and a few new parking spaces will be created for those wishing to use the field or court. This will be a smaller space than previously available, as we need to prevent damage to Clay Green's main sewer. Parking by the field gate will again be available as part of the Village Hall overflow car park.

The funding will cover some additional features such as a pergola, benches, and a raised flower bed with seating, located between the shop and the hall. We hope that this newly created area will become an integral part of village life.

As we have the potential for a small amount of extra funding, we would welcome your ideas to possibly be included in the project. For any comments or questions, please contact Cllr Richard Ashton:

alfricktenniscourt@gmail.com - 07879651583



JUBILEE SPINNEY

Members of the Parish Council and local Residents recently took part in a working party to clear the Spinney and reinstate the path around the site.



The Council has discussed the future of the Spinney at recent Meetings. Now the weather is getting better, the PC intend to lay wood chippings as a path base around the Spinney.

There has also been talk of installing a bench. Any suggestions for the future of the site are very welcome.

WORK OUT FOR TENDER

To express an interest, please contact richardtimney@yahoo.com

ALFRICK POUND BUS SHELTER



The PC are looking for a local contractor to repair the bus shelter in Alfrick Pound

- Replace or repair missing tiles (approx 5)
- Soffits prepared and painted
- Windows (x3) prepared and painted
- Bench prepared and Painted
- Internal walls and ceiling cleaned and painted

Your Councillors from May 2024

Chair Nathan Catlow (830215), Vice-Chair Thomas Clarke (821228)
Richard Ashton (821340) Graham Messervy-Whiting (07759 090 429)
Stephen Glazzard, Barbara Prodger - Rebecca Head (07983023039)
Penny Hayward, Garth Lowe (833362)

Clerk - Richard Timney - richardtimney@yahoo.com - 07515 881231

Parish Footpaths Warden - Garth Lowe & Graham Messervy-Whiting

Parish Tree Warden - Simon Warr

Parish Council web site;

<https://e-services.worcestershire.gov.uk/myparish/> - click on Alfrick.

Here you can find minutes of the council meetings, the date of the next meeting of the council and the meeting agenda a week in advance of the meeting

Council Facebook Page: <https://www.facebook.com/alfrickandlulsleyparish>

Meetings of the Parish Council usually meets on the third Thursday every two Months. The next meeting is Thursday 20th June at Alfrick Village Hall. Members of the public may wish to raise matters of general concern prior to the formal meeting from 7PM. All Welcome

Your District Councillors:

Sarah Rouse: 01886 833653 sarahrouse72@gmail.com

Peter Whatley: 01886 884126 peter.whatley@malvernhillscdc.net

Alfrick and Lulsley Parish Chairman Yearly Report Summary for 2023/24

Projects:

- **Tennis Court:** Our biggest project this year has been the planning and construction of a new tennis court, led by Councillor Richard Ashton. We're all looking forward to seeing the new court in action and watching it become a hub of activity and enjoyment for everyone in the community.
- **Jubilee Spinney Maintenance:** In the spring, we maintained Jubilee Spinney by clearing paths around the trees and cutting back growth for easier access. Additionally, the tree that received storm damage has been cleared. This effort was led by our dedicated tree warden, Simon Warr.
- **New Bus Stop:** A new bus stop was finally constructed in the village, with generous donations from the Village Shop and Councillors Rouse, Whatley, and Hanks. The project was spearheaded by Councillor Clarke.
- **Supporting Local Trades:** We are always keen to support local tradespersons to fulfil maintenance and projects around the parish.

Governance and Procedures:

- **Co-option Process Improvement:** We have improved and documented the council co-option process to make it more consistent and fairer.
- **Spending Rules:** We have instituted new expenditure rules to ensure the council gets the best value for money.

Ongoing Issues and Initiatives:

- **Green Lanes Usage:** Addressing the issues revolving around the usage of Green Lanes and reducing the disturbance caused by their misuse is currently being led by Councillor Steven Glazzard.

Meetings and Financial Management:

- **Meeting Schedule:** To align with other local PCs, reduce costs, and accommodate those in employment, our meetings are now bi-monthly.
- **Council Tax Precept:** We have worked diligently to ensure that the council tax precept increase was as minimal as possible by trimming unnecessary costs. This increase is significantly lower than that of many other parishes.

Acknowledgements:

- We extend our thanks to all our councillors for their dedication and for giving up their time to serve our community. We encourage members of the public to attend meetings. Your participation/feedback are invaluable to us. **Thank you for being an integral part of our vibrant local parish!**