

Spring 2020 Newsletter



Powick Parish Council

Serving the villages of Powick & Callow End



*Powick Parish Council priorities:
Economic well being; a safe and secure environment; genuine
sustainability, and the promotion of health and recreation.*

Chairman's Chunter



Keep CalmCarry On!

Since I penned the original routine Chairman's Chunter things have moved on. As you will all be vividly aware, we are living a life which none of us could have envisaged only a few weeks ago. Those daily events and activities, whether they be work, social or community based, have largely disappeared from our schedules and we are all getting used to managing each day as it comes, usually without contact

with those much cherished family and friends who often bring that extra impetus to our lives.

And for those in our Parish who find themselves in the front line of tackling the emergency we face, there is the added responsibility of trying to protect, treat and serve the general public whilst ensuring that their nearest and dearest do not suffer as a result of their efforts to help others.

Evidently, we are grateful for all the work everyone is doing to support each other through what could well be a lengthy period of lockdown. NHS staff, Cleaners, Care workers, First responders, frontline workers in our shops, our food producers and all the delivery personnel needed to get stuff moving are deserving of our gratitude and the Parish Council expresses its thanks on behalf of all parishioners.

Locally, thanks are due to those of you who have checked on possible vulnerable neighbours and helped with ensuring they get the support they need. The Parish Council has also worked in combination with County Cllr Tom Wells in compiling and coordinating a register of those needing help and those offering help. This has been compiled using data collected from forms which have gone to every house in the parish, but if anyone has not seen these, then please register via the Powick and Callow End Coronavirus Facebook site. Additional information is also available on the Powick Parish Facebook, Callow End Village noticeboard and Byrons Wood Facebook sites.

Continued...

Current support has included collecting prescriptions and medication, doing the shopping, organising deliveries and making telephone or social media contacts just to ensure people are not left to feel totally isolated.

Coordinating support in the parish is no easy task! All the evidence shows that the most effective service should be arranged in very local areas. Powick parish is a very large area and is made up of several individual areas such as Bastonford, Hospital Lane/Byron's Wood, Collett's Green, Powick village , Callow End, Deblins Green and Clevelode; even within these areas there are sub divisions - Winsmore, Hospital Lane, Tannery Drive, The Drive/Malvern Rd, The Village/Coventry Arms/Upton Rd/Malvern Rd, Alton Park/Bow Hill/ Nixon Court, Lower & Upper Ferry Lane , Jennet Tree Lane etc) - by monitoring those of us who are vulnerable at neighbourhood level we can probably ensure a more targeted service.

To this end, if you have not already done so, please let us know that you are actively keeping an eye on things in your specific street/close/road/lane by ensuring you are on the list compiled by Tom Wells - contact details listed below.

Should anyone feel they need any additional support they are not receiving please feel free to contact -

Tom Wells (District & County Councillor) on 01905 831752
(email talwells@btinternet.com)

Andy Lamb (Parish Council Chairman) on 01905 830737
(email andrewlamb33@gmail.com)

In conclusion, I don't have any really significant words of wisdom. The vast majority of parishioners have understood what is needed and are following the required guidelines, which is probably about all we can do currently. Let us hope and pray that we emerge stronger and more appreciative of our fellow citizens once we have got through all this. Take care and keep safe .

Andy Lamb, Chairman of Powick Parish Council

All Hands To The Pump!



Image courtesy of Worcester News

Responding to floods of biblical proportions on Sunday February 16th , the residents of Powick and Callow End showed the true spirit of community cohesion in supporting one another.

Some 26 properties in Powick and 3 in Callow End were seriously affected by the rising waters, meaning the vast majority were forced to leave their homes and seek accommodation elsewhere. Most badly affected were those in The Village, Powick, two in Lower Ferry Lane and one at Pixham House, Callow End.

Although levels on the river Teme were supposedly lower than in 2007, those who witnessed the water overtopping the bund which was constructed following that flood, will testify that the speed and velocity with which the water rushed through the houses on the west side of the A449 and then continued on through alongside the garage created greater damage than its predecessor.

The response from the wider community was instantly impressive. Neighbours checked on neighbours, The Red Lion welcomed drenched householders, refuge was provided for people and pets alike and the wheels were set in motion to find emergency accommodation. The efforts of our County Cllr, Parish Cllrs, Rev Gary and parishioners in general ensured a safe haven in local hotels and houses in the first instance. Our sincere thanks go to Stanbrook Abbey Hotel, the Premier Inn, Malvern, and The Abbey Hotel for their assistance.

Continued...



Meanwhile on Beauchamp Lane in Callow End the residents were mounting their own operation using the Bund and pumps they had created and managed themselves in order to repel flood water from the Severn. They are to be congratulated in successfully preventing serious flooding of property in that location. There are probably lessons for us all to learn from the local ownership and execution of this operation.

St Peter's Church became a collection point for all kinds of goods donated to assist those in need, and Fran and Deb at the Red Lion worked with Steve Symonds to distribute these resources effectively. Whilst many of those affected were able to mobilise insurance companies in moving things on, additional help was needed by some residents. This help has been forthcoming as the village and other partners have stepped up to support everyone without having to be asked. Following a request from the Parish Council, 25 locals gave up their Saturday morning to shift damaged goods in a clear up operation, and the Tzu Chi Foundation, a Buddhist Relief Charity, have provided hands on support of both a practical and spiritual nature, making a significant contribution to restoring damaged property and people. Many parishioners will be seeking explanations as to why we were not better prepared for such a flood and the Parish Council pledges that it will be instrumental, along with a range of appropriate interested parties in helping with a proper debriefing process.

In the meantime, given the divisive times which we have experienced over recent years, suffice to say that, without batting an eyelid, the people of Powick and Callow End supported each other when it really mattered!

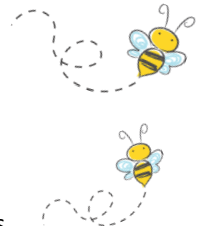
Bees & Pollinators Need Our Help!

In recent years insects and especially bees numbers have fallen, due to climatic changes and the use of insecticides. Bees generally are the most efficient pollinators as they have evolved to become totally dependent on flowering plants for their food. Bumble bee colonies die in autumn leaving only the queen to build a nest to overwinter in. If the winter is mild she may emerge too early, before her normal food source is in flower and may starve. By growing food source plants for butterflies and pollinators we can help sustain them, even in the winter months.

Insects are most frequently the pollinators that ensure a successful harvest and our gardens and patios can offer a refuge to them when the fields are bare. Aim to grow a variety of plants to offer insect friendly flowers in every month of the year.

Five simple steps to help bees and other insect pollinators;-

1. Plant year round flowers, shrubs and trees for bees
2. Provide nesting sites and materials
3. Don't use weed killers and bug sprays
4. Leave the mower in the shed for longer and let garden weeds flower
5. Create a bee watering hole



Insects, butterflies and bees are attracted to flowers by colour and scent and the need for them to find their foods of pollen and nectar. Highly cultivated blooms with large heads of tightly packed petals may look good but don't allow the insects to feed. A better choice is the daisy like or trumpet shaped flower that allows the insects to tap the store of nectar. Many trees and shrubs can offer nourishment to bees during winter and early spring. Emerging bumble bees may be seen visiting catkins and pussy willows or a pot of crocus as the temperature rises. Low growing herbs and plants can provide an important source of food. Examples of good pollinator plants include -

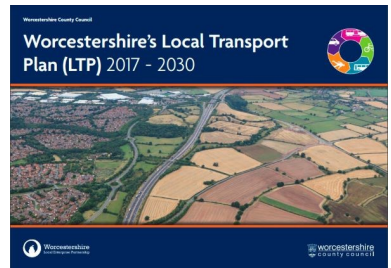
Crocus, Winter Aconite, Snowdrop, Hellebore, Forget-me-not, Lungwort, Aquilegia, Sedum, Hardy Geraniums, Scabious, Marigolds, Foxgloves, Echium, Verbena, Yarrow, Lavender, Comfrey, Thyme Marjoram, Chives, Sage, Hibiscus, Berberis, Crab Apple, Winter Flowering Jasmine, Hazel, Mahonia, Hawthorn, Hebe, Pussy Willow, Cotoneaster and Flowering Cherry.

Climate Emergency

Powick Action on Climate Emergency

The Powick Action on Climate Emergency sub-group has been meeting regularly since its formation last year to take action on this issue within Powick Parish Council and the wider community. These updates are one of our means of feeding our progress back to you and encouraging your action and engagement with this issue.

To date we have been working to define our aims and approach, as well as taking what action we can now. So far this has included working to support work on the cycle/walkways proposed in our area (see Worcestershire's Local Transport Plan - LTP4), renewing rather than replacing a number of community assets (such as noticeboards and damaged bins etc), ensuring the new Hospital Lane development has significant sustainability built in, looking at tree planting/re-wilding options and engaging with our representatives and other groups working in this area.



We have also been working to gather information and present it in a way that is helpful for anyone else wishing to get involved via our website – www.powickclimateaction.org. We welcome any comments on how we can do this more effectively.

The next phase of our work for PACE is to engage you, the wider community, in this. As your representatives, the agenda we set and action we take should reflect your input into this process. Moreover, with such a pressing issue we need more people involved in a wider group to take the action required. Keep your eyes peeled for information about PACE public meetings and please come along.

Alternatively, you can email us now – contact@powickclimateaction.org
If you are interested in finding out more about how you might get involved with PACE, have some skills you think we'd find helpful, or if you would like some advice on action you can take in this area, we are keen to hear from you!

Find It - Map It - Save It



Find It - Map It - Save It is a campaign led by the Ramblers Association to try to save thousands of miles of lost paths, and is because the Countryside and Rights of Way Act 2000, (known as the Crow Act) has placed a deadline for adding unrecorded paths to official maps by January 2026.

The Crow Act has enshrined in legislation;

- The right to roam in certain upland and uncultivated areas of England and Wales. Scotland already having a tradition of unhindered access to open countryside, (providing care is taken not to cause damage or interfere with activities including farming and game stalking).
- A staged review of Public Rights of Way.
- Also changes in respect of nature conservation.

In 1949 the government required councils to draw up definitive maps of all footpaths and bridle ways and byways in their area. However the Crow Act included a commitment to 'extinguish' any pre 1949 paths not on definitive maps by 2026. We are interested in the Powick parish and you may be able to help.

The Ramblers Association states that footpaths are part of our heritage. They tell us how previous generations travelled to work, used the pubs and shops, allowed us access around the countryside, and they estimate there are 10,000 unrecorded paths nation wide.

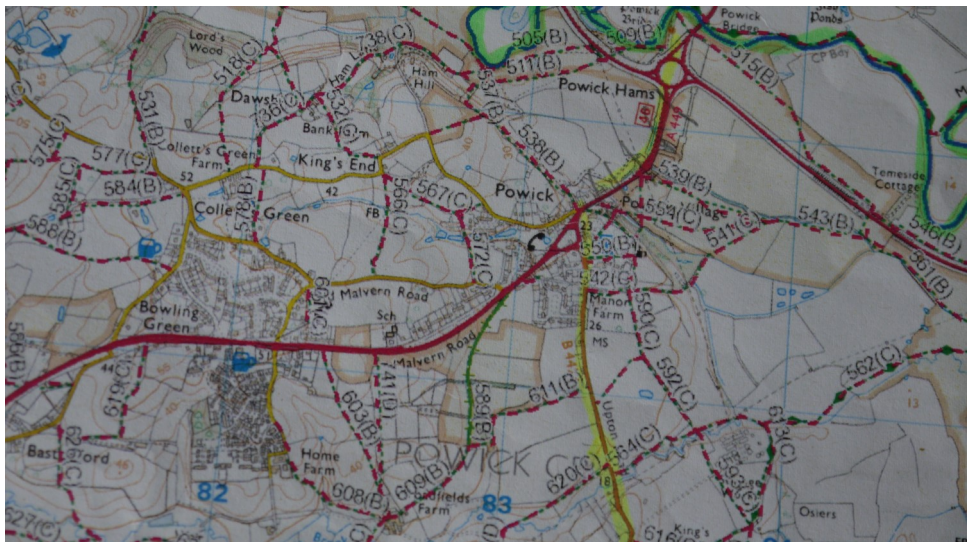
Ramblers have set up a link: ramblers.org.uk/dontloseyourway. This website divides the whole of England and Wales into 1km by 1km squares and asks volunteers to look out for any differences between a square on the current OS map and those from over a century ago. You don't have to be a member of the Ramblers to take part. Simply log on and the rest is self explanatory. If studying and comparing maps isn't your idea of a good time, there are other ways to help and this is where your local knowledge could be invaluable. Ideally you should know where to find the definitive map for your area. This is also the best way to report any problems such as blocked paths and broken stiles.

Continued...

To find the map go to www.worcestershire.gov.uk/environmental_services/countryside/leisure/public_rights_of_way/public_rights_of_way_interactive_map. You can check out or report any defects by clicking on menu or just scan the area to find your footpath. This is best achieved by selecting Powick Parish and enlarging the scale of the map.

To report a missing right of way is a little more complicated as various applications are required from the Mapping Team at the Countryside Centre. If your path can not be found on an old map then some evidence of use will be required. The best policy may be to report your missing footpath to your Parish Council and let us apply to the Mapping Team. One good example is a well used footpath to the south of Stanbrook Abbey. This path is shown on the up to date OS map but not on the definitive map. Most people would assume it was! An application has now been made to rectify this.

For further information about parish footpaths, please contact your Parish Paths Warden via the Parish Council council@powickparish.org.uk or tel. 01886 884195.



Neighbourhood Development Plan

Proposed Powick Neighbourhood Development Plan

We introduced the idea of a Neighbourhood Development Plan (NDP) in our Winter Edition. This initiative is all about the community engaging and contributing thoughts and ideas about how it would like to see future development of the parish.

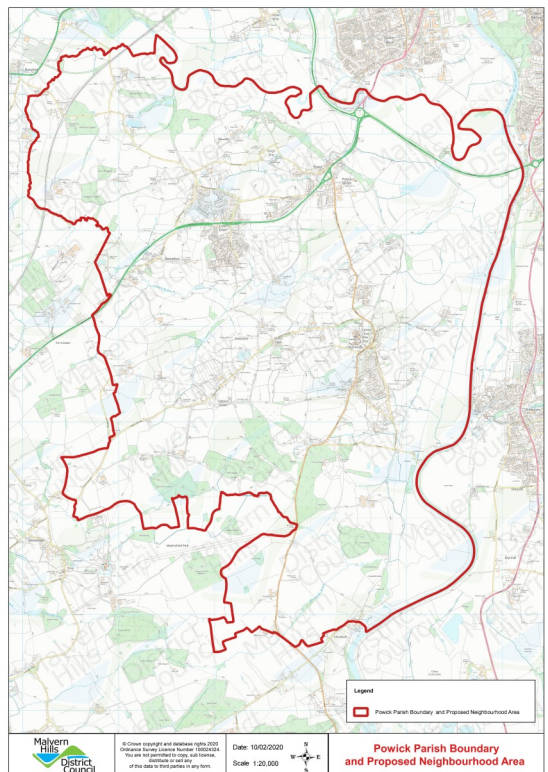
Our Parish Council has now agreed that they should proceed with initiating an NDP to incorporate the whole of Powick Parish.

So what next...?

Designating the Neighbourhood Area – this preliminary stage, is an application to MHDC for recognitions of this status and is currently underway.

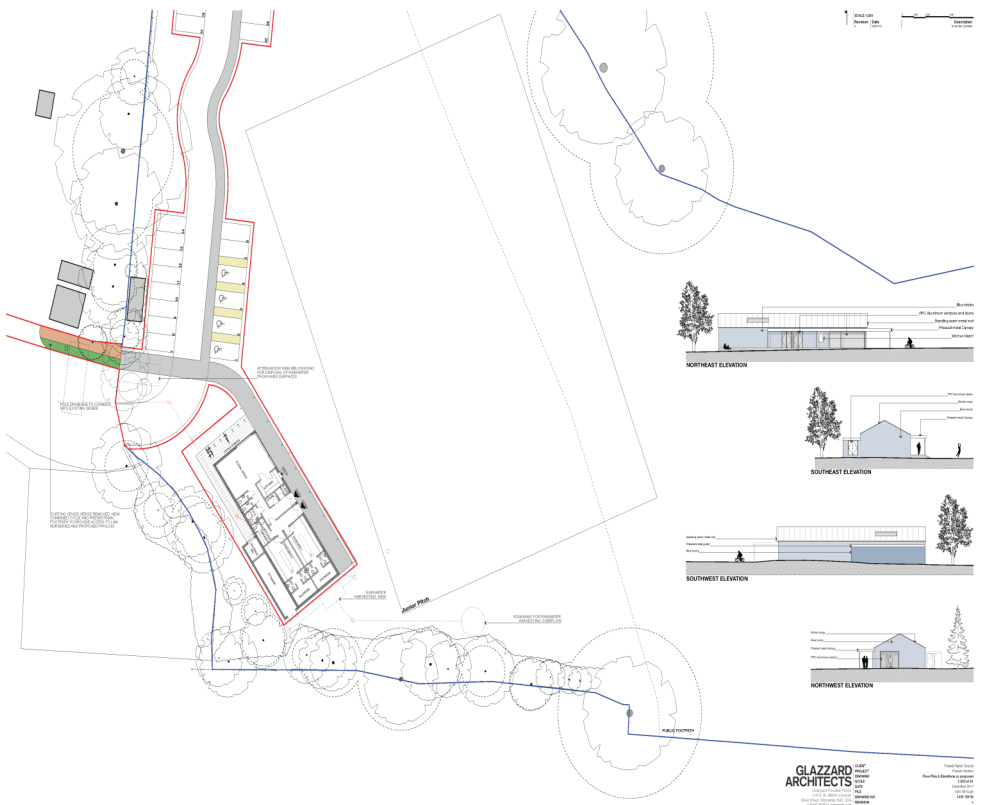
In addition, the Parish Council is gathering together a small group of volunteers to work on the first stages as an initial Project Group. This is to raise awareness and get the community on board by way of a public meeting, leaflets and social media. At this point the team will be looking to recruit volunteers to join the NDP Working Party: hopefully covering a wide age range and with very varied work experience and skills.

For more information contact us at council@powickparish.org.uk



Hospital Lane Playing Field Development

At last, in these dark and unfamiliar times, we are happy to report something positive to look forward to! The Parish Council is proud to reveal that we have moved to a position where we are able to collect tenders with a view to beginning the construction of a Sports pavilion on the Hospital Lane playing field. Evidently the Coronavirus outbreak will have the same effect on the delivery of this scheme as will be the case with all ongoing construction projects throughout the country, but from a finance and tendering point of view we are happy to confirm that we have sufficient money to be able to get things moving as soon as is practicable.



Continued...

Following diligent work to secure funds and ensure proprietary planning, the scheme is now being project managed with the cooperation of the District Council and we are benefitting from the involvement of senior staff from that Council in helping us deliver the project.

A schedule of key dates has been agreed which will see Contractor details finalised by the end of the summer, a date later than originally scheduled but obviously amended due to current circumstances. If all goes well, we would envisage construction commencing later this year.

Finance for the project will come from a combination of Parish reserves, S106 development windfalls and The Football Foundation. When complete, the new pavilion will provide the village with a modern facility designed to encourage active participation in a range of recreational pursuits; it will also offer an attractive social space with the opportunity for community activities on a daily basis with improved access and parking.

Whilst the full Council has contributed to this scheme, our thanks must go to the hard work specifically put in by two key personnel, namely our Clerk, Michelle Alexander, and our Vice Chairman, Colin Phillips, as they have negotiated and navigated the difficult routes to funding, not to mention the minefield that surrounds planning requirements, to bring us to the current position.



Parish Snippets

Listed and Listing You will have noticed in January that the trees around the Cross House in Powick Village were cut down and substantial concrete blocks placed in the road, thereby reducing its width and affecting the traffic on the busy A449. This was because engineers, contracted by Worcestershire County Council, assessed the condition of the 19th century wall and decided it was likely to collapse, a danger to pedestrians and motorists.



The Grade 2 listed building is early C19th with some remnants from the 16th and 17th centuries. Its construction is painted brick and timber with a tile roof. What are the responsibilities of owners of such buildings, when part of the fabric of the building or any construction within its curtilage is a potential obstacle or danger to users of the highway? The usual protocol is for an officer of the Highways Dept at Worcester County Council (WCC) to write to the owner with a report requesting the owner make appropriate repairs. If the owner makes no attempt to remove any intrusion on the highway or repair any dangerous aspect that could affect the highway, then the work can be undertaken by WCC who would then seek payment from the owner.

Moving On? The Travellers residing at Bastonford have yet again applied for planning permission (temporary) as the second Appeal decision expired in November last year. The Traveller's unlawful development of the site - which they own - has still not been resolved. The government requires all Councils to find suitable sites for Travellers and Show people, but MHDC has still not found the required sites, despite a call for sites and a seven week public consultation in 2018. It's the Parish Council view that we should all abide by planning rules and regulations, but what steps has MHDC and the Travellers themselves taken to find an alternative site? MHDC is undertaking yet another "call for sites", with a final decision to be made in 2022 and then with the approval of the Development Plan by the Inspectorate.



Parish Snippets



Phone Boxes Refurbishment - Call for Users The restoration plan for the iconic phone boxes in our parish will soon be underway! The two boxes, one in Powick Village, the other in Callow End, are to have a major refurbishment; necessary because of their poor condition. The work is to be professionally done using BT recommended materials and paint. The Parish Council would like individuals, groups and organisations to come forward with ideas as to the use of the boxes. Ideas already suggested, include book exchanges, school art exhibitions and defibrillator stations, though we do already have defibrillators at Callow End Village Hall and Powick Parish Hall. One possible idea is that the boxes could be used on a six month rotational basis featuring different organisations in the parish. Please contact the Parish Council with your ideas: council@powickparish.org.uk or phone: 01886 884195.

Home Fire Safety Checks Probably unknown to many eligible parishioners, Hereford and Worcester Fire & Rescue Service offers a Home Fire Safety Check. The checks are free and are offered to vulnerable groups in the community, including people living alone, the elderly and those with reduced mobility or sensory impairment. One parishioner registered on the vulnerable persons list was delighted to be visited by a fire crew who arrived in their fire engine and fitted smoke alarms, a heat detector in the kitchen and a carbon monoxide alarm. Advice was given as to fire escape routes, placement of door keys for a safe exit and other safety tips. To enquire about arranging a fire safety check call 0800 032 1155 for advice.



HEREFORD & WORCESTER
HWFR
FIRE AND RESCUE SERVICE

To Catch a Thief We read in our newspapers or view online, headline news about increasing crime figures, which very much became a political football in the recent general election. We regularly report the crime figures for our area. But what can we do as individuals to fight crime?



SmartWater is a means of identifying your property with a liquid that contains a code unique to your property and can only be seen under ultraviolet light. A recent campaign by West Mercia Police aimed to introduce this technology to our parishioners. You can use SmartWater on caravans, bicycles, laptops, cameras etc. For more information call: West Mercia Police 0333 320 7797

Parish Snippets

Lock 'em Out Rural crime is on the increase and of particular interest as we live in a rural parish. It's not the odd sheep or hand tool that's stolen, but professional criminals are now geared up to taking complete flocks of sheep and large farming machinery.

Farmers are now resorting to digging ditches or building earth bunds around their fields to prevent vehicle movements across their boundaries, and hopefully to reduce their increasing insurance costs.



Rural crime is an issue for large areas of the country but it tends to go unreported. It can impact on insurance premiums, food prices and damage local communities. Find out what rural crime is and what can be done to prevent it in our area by visiting the West Mercia Police website <https://www.westmercia.police.uk/Rural-crime>

Worryingly, there have also been two break-ins of vans in Powick recently which have resulted in the theft of tools and merchandise central to the livelihood of the owners.

These figures came too late for inclusion in this month's crime statistic, but we would urge all residents to be consistently vigilant.

If you witness any illegal activity contact your Safer Neighbourhood Police Team telephone 101 (in an emergency always call 999)

Monthly crime statistics for Powick and Callow End 2020

	Anti-social Behaviour	Burglary Dwelling	Burglary	Theft	Safer Neighbourhood Police Team telephone 101 or in an emergency always call 999
Jan	3	0	0	1	
Feb	2	1	1	4	
March	3	1	1	1	

Southern Link Road

Following the last SLR Community Review group meeting we can now report that the contractors have completed 100,000 hours of work on site without any reported health and safety issues. As a result, over £380 has been donated to an Epilepsy charity, due to a 'safe working' charitable incentive.

Works completed since our last bulletin include sheet piling, bored piling, the flood compensation area, the substructure to the Powick Viaduct and the preparation work for the Hams footway bridge at Powick.

It was reported at the meeting that the work had been affected by the floods between October and January but that this had not affected the programmed finish date for the scheme. However additional excessive flooding since the meeting, specifically in mid February has undoubtedly impinged on progress but the full extent of this has yet to be quantified.

Notwithstanding those incidences, the projected timescales for work was as follows, but evidently these are likely to be revised. Mobilisation of the Hams Way bridge was scheduled for June this year, following the completion of the Embankment work in April. The piers and abutments for the new Carrington Bridge were scheduled for May, and the mobilisation of the structural steel installation for April, followed by the main beam lifts in May. *NB the pandemic now means that these dates may be delayed by around 2/3 months*

You will also have noticed that there have been a number of local road closure notices posted , most of which relate to the need for ducting associated with realignments of the Powick roundabout. Most of these concern night time closures in an attempt to minimise traffic disruption. Where possible the Parish Council will continue to post these on the Parish and Village Facebook sites.



Powick Pantomime - Sleeping Beauty



Powick Players

Building on the success of last year's production, Director Jake Heaton assembled a strong cast for Powick Players 2020 offering which played to packed houses in the Parish Hall which was transformed for a week at half term.

Armed with a script which combined traditional plot lines, painful one liners and modern local references, all the performers provided the audience with a continuous mix of acting, singing and dancing of a high standard. The whole evening was delightful and a tribute to the dedication, commitment and considerable skills of all those involved. With its origins a basic village pantomime, Powick Players have seriously moved on and the production is a highly slick, well presented spectacle well worth the entrance fee. The plot loosely centres around the struggle to prevent the Wicked Witch Carabousse and her scary helpers from bumping off Princess Aurora, thereby leaving the coast clear for her to have the handsome prince to herself. Resisting her attempts at mischief are a combination of the King and Queen, the Court Jester, the Prince himself and all the loyal subjects. In a classic encounter, a combination of the traditional ingredients of slapstick, audience participation, chases, ghost scenes, pathos and elation, interspersed with rousing chorus songs and individual melodies, keep us entertained throughout.

As ever, the Dame, outrageously portrayed by the inimitable Rob Leadbetter, kept us laughing with his over the top delivery, whilst sporting a fantastic range of costumes which would have proved a real challenge for even the most experienced wardrobe mistress!

Continued...

The audience instantly warmed to the captivating Princess Aurora played by Emma May White whose delivery and singing was first rate. The bumbling portrayal of the King was carried off well by the evergreen Mike Washbourne, whilst Barbara Washbourne and Joy Hadley almost stole the show with their perfect representations of Carabousse's minions. Helen Broadfield gave a masterful performance as their boss, the pantomime villain, eliciting derision from the audience at every opportunity. Julie Merry, on the other hand, endeared herself to all through her persona of Fairy Fabulous, the likeable tipsy narrator. Additional levity was provided by Oliver Roberts who charmed everyone with his performance as Muddles, clowning his merry way through the story, interacting effectively with the solid character of Captain Odd Job, enthusiastically played by Louise Carter.

An appropriately regal air was provided by Seamus Bradford in the role of Prince Fredric who eventually won the hand of the Sleeping Beauty in a rousing finale which featured the talents of the excellent chorus and the junior dancers from Amelia's Academy. One of the highlights was the riveting delivery of the amusing number entitled 'If I wasn't on the Stage' featuring several cast members – an excellent presentation.

All in all, this was a real spectacle, ably enriched by the off stage crew managed by Brian Charles and the technical team. Well done to all involved, and to Jake in particular!

Powick Players should also be proud of the excellent review posted in their magazine by The National Operatic and Drama Association (NODA).

Powick Players is a 'not for profit' community theatre group based in the village of Powick in Worcestershire and performing at Powick Parish Hall.

The group has a host of talent, much of it local and many of whom have been in the group for quite some time. They welcome new members warmly and enjoy their input. For information please contact admin@powickplayers.co.uk

On Your Doorstep

A loop around Madresfield Estate



This On Your Doorstep takes you on a circular walking route starting on the Old Hills in Callow End before visiting the glorious Madresfield Estate and then returning along the River Severn. It's about ten miles in total but well worth the effort. You might want an OS Explorer 190 map...

To head towards Madresfield village, you are aiming for a gate just off the track leading up from the lower Old Hills car park. You cross this gate, alongside a wooded area and follow the path down across Madresfield Brook, taking in wonderful views of the surrounding countryside and the Malvern Hills on your way. The route to Madresfield village is waymarked across a number of fields. As you near the village Madresfield Court comes into view. You come out onto a small road passing some estate orchards on your left with further glimpses of the estate buildings. Turn left at the main road to walk down through the village. Walk a small section of road and you'll soon find yourself at the gatehouse to Madresfield Estate and back on waymarked footpaths.

Madresfield Estate is a sight to behold! There are many wonderful buildings as you walk through, including of course the main stately home, which has been home to the Lygon family for nearly 900 years. If you want a closer look, under normal circumstances, you can take a tour between April and September; bookable through the Madresfield Estate website <https://www.madresfieldestate.co.uk/>.

The home has many treasures inside, including many examples of the Arts & Crafts movement. Interestingly, documents released by the National Archives in January 2006 showed that emergency plans were made to evacuate Princesses Elizabeth and Margaret there in the event of a successful German invasion following the Dunkirk evacuation in 1940.

From the estate you can opt for a number of waymarked routes to get back to the Old Hills. If you want some refreshments, you can extend the route out a bit to visit the Plough and Harrow in Guarlford, when reopened, before returning via the Rhydd and a beautiful footpath along the River Severn.



Contact the Parish Council

Clerk to the Parish Council

Ms Michelle Alexander, 'Guestwick', Suckley WR6 5EH

Tel: 01886 884195 or Mobile: 07841 862277

Email: council@powickparish.org.uk

Website: <http://e-services.worcestershire.gov.uk/myparish>

Chairman of the Parish Council

Andy Lamb, 9 Old Rectory Close, Powick WR2 4QU

Tel: 01905 830737 or Mobile: 07973 679774

2020 Parish Council Meetings

6th May - a virtual meeting is to be held

3rd June Callow End Village Hall (to be confirmed or may be virtual)

1st July Powick Parish Hall (to be confirmed or may be virtual)

No meeting is held during August

Meetings start at 7.30 pm

Find us on 

District and County Councillor Tom Wells

Tel: 01905 831752 or Email: talwells@btinternet.com

District Councillor Kathy Wells

Tel: 01905 831752 or Email: katherine.wells@malvernhillsc.net